

REAL ACTIVE EQUIP MENT

NEW

S15US
HYDRAULIC MULCHERS

**POWERFUL
MULCHING
PERFORMANCE**



FEMAC
REAL_ACTIVE

NEW S15US DFX

For skid steer loaders 90 - 150 hp
Also available in a dedicated excavator version 15-30 ton

Robust and heavy-duty,
designed for
high-performance
machines.



	S15US DFX 63	S15US DFX 73
hp	90-150	90-150
Working width (In)	63	73
Frame height (In)	25	25
Weight (lbs)	2850	3020
Motor (cc)	107 VT	107 VT
Flow Rate (gal/min)	32-53	32-53
Pressure (PSI)	3500-5500	3500-5500
Rotor Diameter (In)	21	21
N° Teeth	32	40
Transmission belts	1 (2,36")	1 (2,36")
Rotor rpm	2200	2200
Distance from ground (In)	0,8	0,8
N° Counter Blade Rows	3	3



DFX



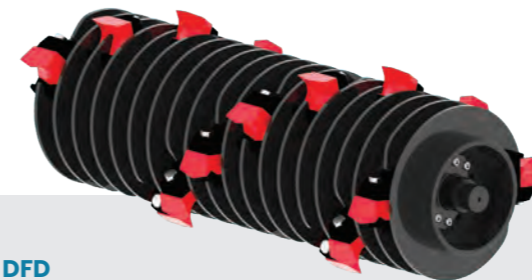
NEW S15US DFD

For skid steer loaders 50 - 135 hp
Also available in a dedicated excavator version 13-25 ton

Versatile, ideal for
working on
medium-sized logs.



	S15US DFD 53	S15US DFD 63	S15US DFD 73
hp	50-75	75-100	100-135
Working width (In)	53	63	73
Frame height (In)	25	25	25
Weight (lbs)	1980	2330	2690
Motor (cc)	60 VT	60 VT	80 VT
Flow Rate (gal/min)	15-30	15-30	30-40
Pressure (PSI)	3000-5500	3000-5500	3000-5500
Rotor Diameter (In)	17	17	17
N° Teeth	24	32	40
Transmission belts	1 (2,36")	1 (2,36")	1 (2,36")
Rotor rpm	2400	2400	2400
Distance from ground (In)	0,8	0,8	0,8
N° Counter Blade Rows	3	3	3

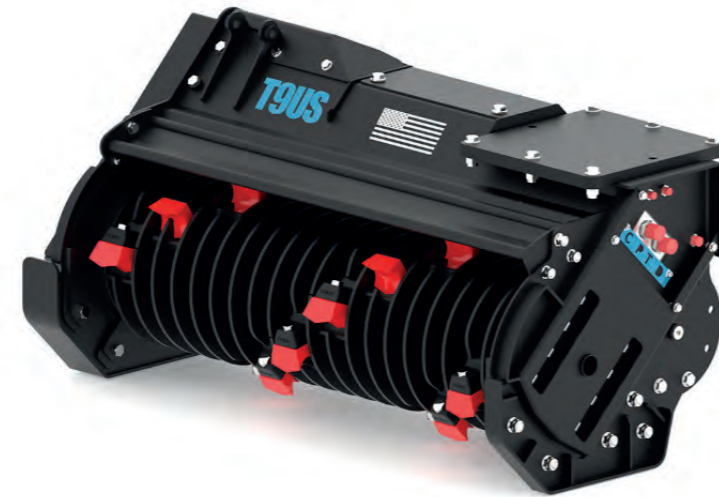


DFD



T9 US

For excavators 5.0-12.0 ton



	T9US DFD28	T9US DFD36	T9US DFD43
ton	5.0-12.0	6.0-12.0	6.0-12.0
Working width (In)	28	36	43
Dimensions (In)	33x26x25	41x26x25	49x26x25
Weight (lbs)	761	882	1036
Motor (cc)	22-27-34-43-51	27-34-43-51	27-34-43-51
Flow Rate (gal/min)	11-14-16-22-28	14-16-22-28	14-16-22-28
Pressure (PSI)	2.900-3.200	2.900-3.200	2.900-3.200
Rotor Diameter (In)	15	15	15
N° Cutting tools	14	18	22
Transmission belts	3	3	3
Rotor rpm	2.600	2.600	2.600

T9 REV

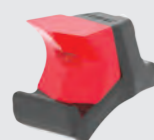
For excavators 5.0-12.0 ton



	T9 FS28 REV	T9 FS36 REV	T9 FS43 REV
ton	5.0-8.0	6.0-8.0	6.0-12.0
Working width (In)	28	36	43
Dimensions (In)	34x32x24	42x32x24	50x32x24
Weight (lbs)	640	792	882
Motor (cc)	22-27-34-43-51	22-27-34-43-51	27-34-43-51
Flow Rate (gal/min)	11-14-16-22-28	11-14-16-22-28	14-16-22-28
Pressure (PSI)	2.900-3.200	2.900-3.200	2.900-3.200
Rotor Diameter (In)	16	16	16
N° Cutting tools	12	18	22
Transmission belts	3	3	3
Rotor rpm	2.600	2.600	2.600



DFD



HF22
Ø max 8"



FS



HF17
Ø max 5"

Femac produces machines for the agricultural and industrial sectors. In the industrial field it offers hydraulic mulchers for forestal land clearing and green maintenance. For the agricultural sector, it offers rear hedge mowers for road and agricultural maintenance and multifunctional backhoes, from hobbyist to professional-level models.

AGRY LINE

REAR HEDGE
MOWERS

BACKHOES

Rear hedge mowers for road maintenance and agricultural work

INDU STRY LINE

HYDRAULIC
MULCHERS

Hydraulic mulchers for heavy duty forestry land clearing and green maintenance



DISCOVER
MORE



THIS IS
WHO WE ARE.
THIS IS FEMAC.

YESTERDAY'S **KNOW-HOW**,
TODAY'S **DETERMINATION**,
TOMORROW'S **INNOVATION**.



FEMAC S.R.L.

Voc. Tassinara, 104/bis - 06018
Trestina di Città di Castello (PG), Italy

Tel. +39 075 8569831
info@femac.eu