

REAL ACTIVE EQUIP MENT

NEW

S15US
HYDRAULIC MULCHERS

**POWERFUL
MULCHING
PERFORMANCE**



FEMAC
REAL_ACTIVE



YESTERDAY'S **KNOW-HOW**,
TODAY'S **DETERMINATION**,
TOMORROW'S **INNOVATION**.

A company with **fresh ideas and determination combined with experience acquired** over decades in the field of robotic welding and precision mechanics. Femac: a family business with solid roots thanks to Emilio Fratini, founder since 1978.

A constantly growing company, **proposing a wide range of products, all made in Italy**: from hydraulic mulchers and backhoes to ever evolving hedge mowers.

We are a team of highly skilled artisans. We **strive everyday with tenacity and commitment to keep up** with an ever growing market. We have the restlessness and technological determination of a company that thinks big.

We **use research and inspiration to build upon our made in Italy** craftsmanship.

THIS IS WHO WE ARE.
THIS IS FEMAC.

INDUSTRY LINE
HYDRAULIC MULCHERS

AGRY LINE
REAR HEDGE MOWERS
BACKHOES



NEW S15US DFX

For skid steer loaders 90 - 150 hp
Also available in a dedicated excavator version 15-30 ton

Robust and heavy-duty, designed for high-performance machines.



	S15US DFX 63	S15US DFX 73
hp	90-150	90-150
Working width (In)	63	73
Frame height (In)	25	25
Weight (lbs)	2850	3020
Motor (cc)	107 VT	107 VT
Flow Rate (gal/min)	32-53	32-53
Pressure (PSI)	3500-5500	3500-5500
Rotor Diameter (In)	21	21
N° Teeth	32	40
Transmission belts	1 (2¼ inch)	1 (2¼ inch)
Rotor rpm	2200	2200
Distance from ground (In)	1	1
N° Counter Blade Rows	3	3

Excavator version

	T15US DFX 63
ton	20.0-30.0

EQUIPMENT

TECHNICAL FEATURES AND STANDARD EQUIPMENT

- » Automatic variable displacement piston motor
- » Fixed universal hitch
- » DFX Rotor with fixed teeth in widia or hardened blade with bite limiter
- » Helicoidal rotor with 3 screws
- » Forged and hardened counter-blades
- » Very hard anti-wear frame
- » Toothed high-performance belts transmission
- » Internally reinforced double-case body with interspace
- » Protective belts cover
- » Inside Rotor Supports with "labyrinth" for the protection of the bearings from the impurities
- » Adjustable bearings of 1st quality
- » Manometer for working pressure control
- » Mechanical push frame
- » Low frame for better visibility

AUTO AUTOMATIC VARIABLE DISPLACEMENT PISTON MOTOR (ACCESSORY)

CC	75/107
gal/min	32-53

DFX



STANDARD EQUIPMENT

HF20
Ø max 20"



HF21
Ø max 14"



NEW S15US DFD

For skid steer loaders 50 - 135 hp
Also available in a dedicated excavator version 13-25 ton

Versatile, ideal for working on medium-sized logs.



	S15US DFD 53	S15US DFD 63	S15US DFD 73
hp	50-75	75-100	100-135
Working width (In)	53	63	73
Frame height (In)	25	25	25
Weight (lbs)	1980	2330	2690
Motor (cc)	60 VT	60 VT	80 VT
Flow Rate (gal/min)	15-30	15-30	30-40
Pressure (PSI)	3000-5500	3000-5500	3000-5500
Rotor Diameter (In)	17	17	17
N° Teeth	24	32	40
Transmission belts	1 (2¼ inch)	1 (2¼ inch)	1 (2¼ inch)
Rotor rpm	2400	2400	2400
Distance from ground (In)	1	1	1
N° Counter Blade Rows	3	3	3

Excavator version

	T15US DFD 53	T15US DFD 63
ton	12.0-20.0	16.0-20.0

EQUIPMENT



TECHNICAL FEATURES AND STANDARD EQUIPMENT

- » Automatic variable displacement piston motor
- » Fixed universal hitch
- » DFD Rotor with fixed hardened blade teeth with bite limiter
- » Forged and hardened counter-blades
- » Very hard anti-wear frame
- » Toothed high-performance belts transmission
- » Internally reinforced double-case body with interspace
- » Protective belts cover
- » Inside Rotor Supports with "labyrinth" for the protection of the bearings from the impurities
- » Adjustable bearings of 1st quality
- » Manometer for working pressure control
- » Mechanical push frame
- » Low frame for better visibility

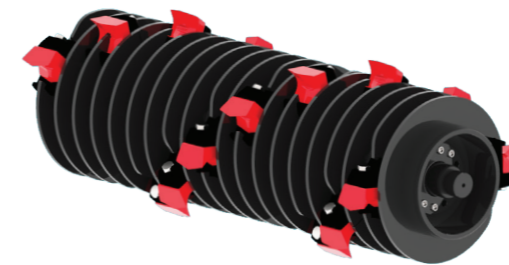
AUTO



AUTOMATIC VARIABLE DISPLACEMENT PISTON MOTOR (ACCESSORY)

	CC	40/60	65/80
gal/min		15-30	30-40

DFD



STANDARD EQUIPMENT

HF22 Ø max 8"



T9 US

For excavators 5.0-12.0 ton



	T9US DFD28	T9US DFD36	T9US DFD43
ton	5.0-12.0	6.0-12.0	6.0-12.0
Working width (In)	28	36	43
Dimensions (In)	33x26x25	41x26x25	49x26x25
Weight (lbs)	761	882	1036
Motor (cc)	22-27-34-43-51	27-34-43-51	27-34-43-51
Flow Rate (gal/min)	11-14-16-22-28	14-16-22-28	14-16-22-28
Pressure (PSI)	2.900-3.200	2.900-3.200	2.900-3.200
Rotor Diameter (In)	15	15	15
N° Cutting tools	14	18	22
Transmission belts	3	3	3
Rotor rpm	2.600	2.600	2.600

EQUIPMENT

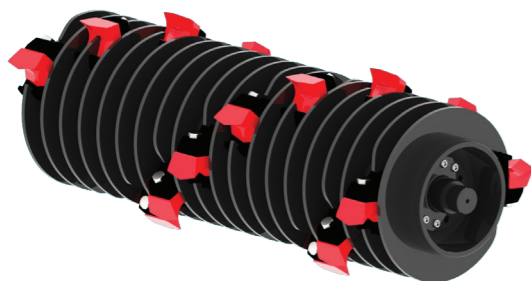
TECHNICAL FEATURES AND STANDARD EQUIPMENT

- » MZ Helicoidal Rotor with hammers austempered and cutting blade interchangeable
- » FS Helical forestal rotor with 360° rotating hammers
- » DF Forestal rotor, fixed teeth
- » DFD Rotor, double edge fixed teeth with bite limiter
- » Toothed high-performance V-belts transmission
- » Internally reinforced double-case body with inter-space
- » Protective belts cover
- » Front hood delete. Fully unrestricted rotor for increased cutting capacity
- » Mechanically adjustable rear hood
- » Reinforced side skids with Hardox
- » Inside Rotor Supports with "labyrinth" for the protection of the bearings from the impurities
- » Double Row roller adjustable bearings of 1st quality
- » Valves block complete with priority valve for adjusting oil flow, anti-shock valve (pressure relief valve), anti-cavitation
- » Cast iron gear motor

CAST IRON HYDRAULIC GEAR MOTOR RANGE

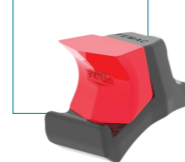
ton	5.0-6.0	6.0-7.0	7.0-8.5	8.5-10.0	10.0-12.0
CC	22	27	34	43	51
gal/min	11	14	16	22	28

DFD



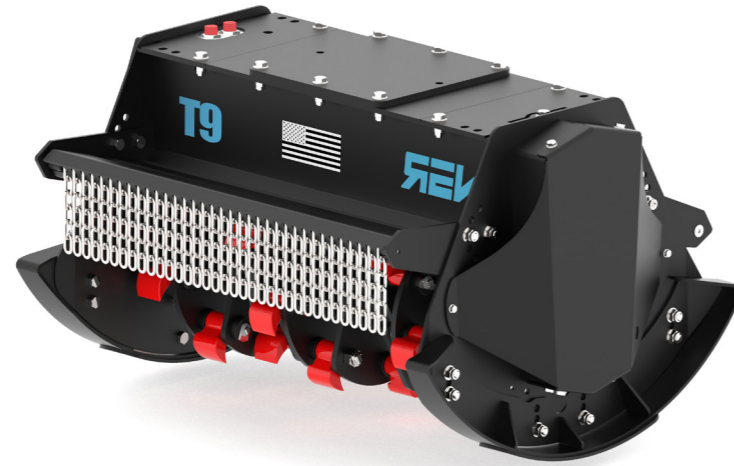
STANDARD EQUIPMENT

HF22
Ø max 8"



T9 REV

For excavators 5.0-12.0 ton



	T9 FS28 REV	T9 FS36 REV	T9 FS43 REV
ton	5.0-8.0	6.0-8.0	6.0-12.0
Working width (In)	28	36	43
Dimensions (In)	34×32×24	42×32×24	50×32×24
Weight (lbs)	640	792	882
Motor (cc)	22-27-34-43-51	22-27-34-43-51	27-34-43-51
Flow Rate (gal/min)	11-14-16-22-28	11-14-16-22-28	14-16-22-28
Pressure (PSI)	2.900-3.200	2.900-3.200	2.900-3.200
Rotor Diameter (In)	16	16	16
N° Cutting tools	12	18	22
Transmission belts	3	3	3
Rotor rpm	2.600	2.600	2.600

EQUIPMENT

TECHNICAL FEATURES AND STANDARD EQUIPMENT

- » MZ Helicoidal Rotor with hammers austempered and cutting blade interchangeable
- » FS Helical forestal rotor with 360° rotating hammers
- » DF Forestal rotor, fixed teeth
- » Toothed high-performance V-belts transmission
- » Internally reinforced double-case body with interspace
- » Protective belts cover
- » Symmetric shearing head, for a faster cut with the rotation of the excavator
- » Input and output mouths completely identical, adjustable
- » Adjustable hood, fully openable for higher cutting capacity
- » Side skids adjustable on 3 positions to change the height of the cut, reinforced with Hardox
- » Inside Rotor Supports with "labyrinth" for the protection of the bearings from the impurities
- » Double Row roller adjustable bearings of 1st quality
- » Valves block complete with priority valve for adjusting oil flow, anti-shock valve (pressure relief valve), anti-cavitation
- » Cast iron gear motor
- » Accident prevention chains protections according to EC directives

CAST IRON HYDRAULIC GEAR MOTOR RANGE

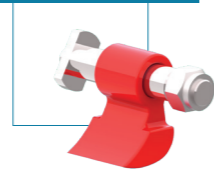
ton	5.0-6.0	6.0-7.0	7.0-8.5	8.5-10.0	10.0-12.0
CC	22	27	34	43	51
gal/min	11	14	16	22	28

FS



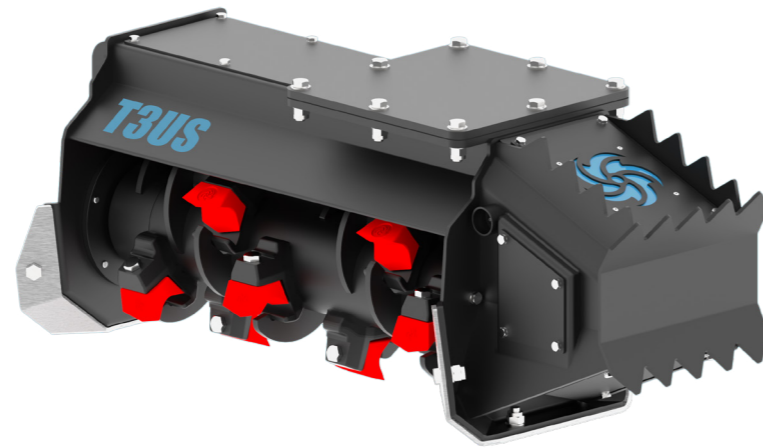
STANDARD EQUIPMENT

HF17
Ø max 5"



T3 US

For excavators 2.5-7.0 ton



	T3US DFD50	T3US DFD75	T3US DFD100
ton	2.5-4.0	4.0-5.5	5.5-7.0
Working width (In)	20	30	40
Dimensions (In)	34x17x18	44x17x18	54x17x18
Weight (lbs)	374	440	506
Motor (cc)	12	16	20
Flow Rate (gal/min)	9	12	15
Pressure (PSI)	2.600-3.600	2.600-3.600	2.600-3.600
Rotor Diameter (In)	13	13	13
N° Cutting tools	10	14	18
Transmission belts	direct	direct	direct

EQUIPMENT

TECHNICAL FEATURES AND STANDARD EQUIPMENT

- » Direct transmission
- » Internally reinforced with double metal sheet
- » Two rows forged and hardened counter-blades
- » Funnel-shaped frame for higher cutting capacity
- » Fixed thumb bracket built into the frame interchangeable side skids
- » Helicoidal DFD Rotor, double edge fixed teeth with bite limiter
- » Internally reinforced double-case body with interspace
- » Front hood delete. Fully unrestricted rotor for increased cutting capacity
- » Inside Rotor Supports with "labyrinth" for the protection of the bearings from the impurities
- » Double Row roller adjustable bearings of 1st quality
- » Valves block complete with priority valve for adjusting oil flow, anti-shock valve (pressure relief valve), anti-cavitation
- » Cast iron gear motor
- » Protective cover for motor

HYDRAULIC MOTOR RANGE

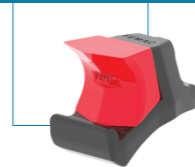
ton	4.0	5.5	7.0
CC	12	16	20
gal/min	6	8	11

DFD



STANDARD EQUIPMENT

HF22
Ø max 5"



GENERAL CONDITIONS OF SALE

FORWARD

These General Conditions of Sale (hereinafter, the "General Conditions"), together with the special conditions listed in the Order Confirmation, govern sales of products between FEMAC SRL (hereinafter, the "Seller") and any purchaser (hereinafter, the "Customer") and prevail over any other different clause inserted on forms or other documents used by the Seller and/or Customer (hereinafter, jointly called the "Parties").

- The object of the sales governed by these General Conditions are all the agricultural machinery in the Seller's price list (hereinafter, the "Products") in effect at the time the Customer's purchase order was sent, with the specifications shown in it.
- These General Conditions can only be waived by the provisions of the Order Confirmation.

PRICES

The prices shown are in Euro (€) and do not include VAT, which remains the Customer's responsibility.

- This price list cancels and replaces all previous ones. The prices shown are subject to change without notice and they will, in any case, be those in effect at the time of delivery.

DELIVERY

Except where specified otherwise, the goods are delivered EX-WORKS (Incoterms 2000) at our plant in Trestina (Perugia, Italy).

- The goods travel as the Customer's risk, even if shipping is paid to the destination.

PAYMENTS

Payments are to be made in the manner agreed. Payment is always due on the date the Seller issues the invoice and in the specified currency. Failure to pay will authorize the suspension of supplies.

- Even a partial delay in payment will trigger the late payment interest established by DL 231/2002 (conforming to European Directive 35/2000/EC) and the right to demand payment in full.

RESERVATION OF OWNERSHIP

The Products remain the Seller's property until the Customer has paid the price in full and, in any case, until it is received. This notwithstanding, the Parties agree that the risks of the loss or damage of the Products, for any reason, will pass to the Customer from the moment of delivery EX-WORKS (Incoterms 2000).

- The Customer must notify the Seller of every lien or injunction filed by third parties on the Products with reserved ownership, within 24 hours. The Customer remains responsible to the Seller for all costs or damage suffered by the latter due to such acts.

WARRANTY

The Seller warrants that its Products are free of defects in material or workmanship under conditions of normal use. The warranty period is 12 (twelve) months from the date of delivery and, in any case, cannot be suspended or extended for any reason. The Seller does not give the Customer any other implicit or explicit guarantee.

- In any case, the warranty does not cover defects due to normal wear and tear such as, but not limited to: cutting tools, bushings, bearings, belts, gaskets, oil, PTO transmissions, flexible wiring, hydraulic hoses and accident-prevention protections.
- Products defects, flaws or differences must be reported within 8 days from their discovery, on pain of voiding the warranty. After that term, the Customer is understood to have accepted the supply without reservation.
- During the warranty period, the Seller undertakes to supply pieces expressly acknowledged to be defective, with the Customer remaining responsible for all charges for shipping, packing and labor.
- The warranty and any credit will only be recognized after the defective piece has been received at the factory. The Customer is responsible for the cost of shipping the piece to the Seller.
- The Seller will not be liable for any damage caused by late delivery, breakage of the Products, or parts of them, as well as the use of the Products themselves, except when unavoidably required by the law.
- Customer complaints, as well as any legal action taken, do not, in any case, give the Customer the right to suspend or delay payments due under the sales contract.

DISAGREEMENTS

The court of Perugia, Italy is exclusively competent for any disagreements that may arise between the Parties.

CONTACT US:

**SALES DEPT
BACK OFFICE**
sales@femac.eu
Sara Pallone

**SPARE PARTS & SALES DEPT
BACK OFFICE**
parts@femac.eu
Samantha Rubini

SALES EUROPE
fabio.cecchetti@femac.eu
Tel. +39 338 962 4310
Fabio Cecchetti

SALES ITALY
massimo.beriozzi@femac.eu
Tel. +39 348 565 7351
Massimo Bertozzi

TECHNICAL DEPT
tecnico@femac.eu
Andrea Palazzini

ACCOUNTS DEPT
amministrazione@femac.eu

LOGISTICS DEPT
logistics@femac.eu

GENERAL INFORMATION
info@femac.eu
Tel. +39 075 8569831

**REAL
ACTIVE
EQUIP
MENT**



FEMAC S.R.L.

Voc. Tassinara, 104/bis - 06018
Trestina di Città di Castello (PG), Italy

Tel. +39 075 8569831
info@femac.eu